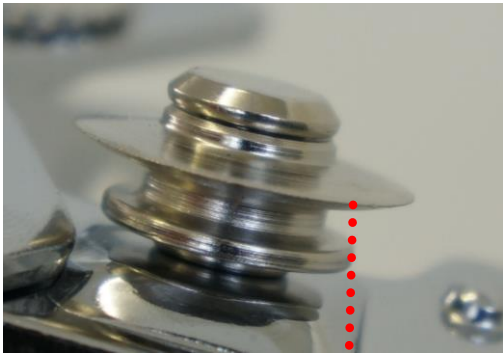


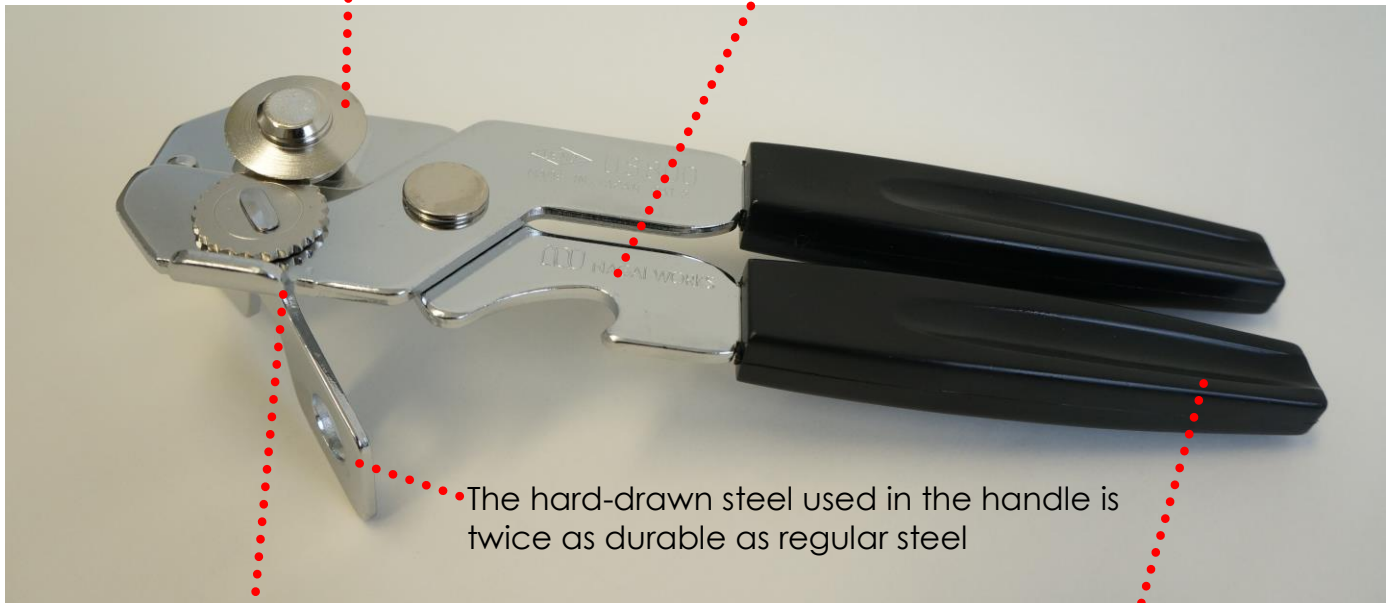
US-800

A classic can opener invented in the United States

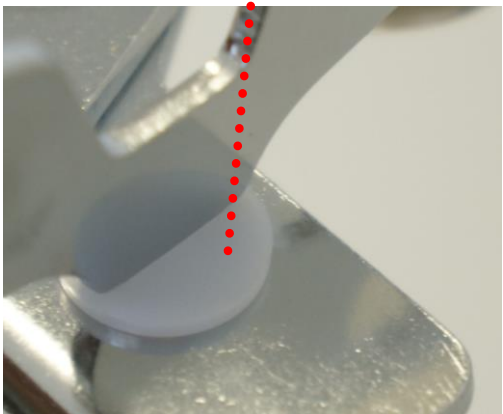


A long lasting heat tempered steel cutter wheel easily cuts through thick can tops

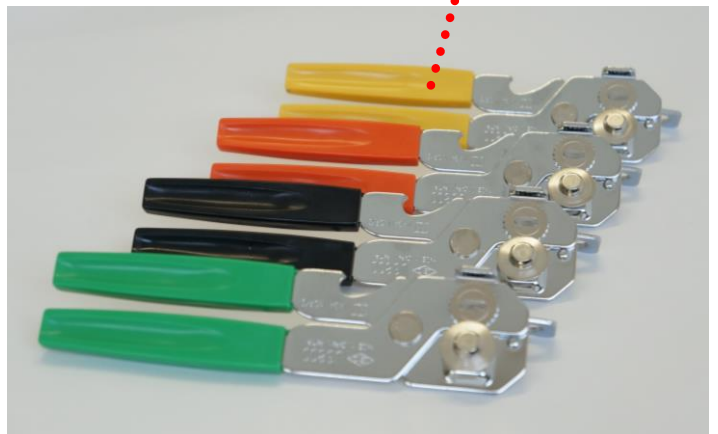
Bottle opener



The hard-drawn steel used in the handle is twice as durable as regular steel



A Duracon bearing allows smooth operation of the rotary handle



Four color variations



NAGAI WORKS CORPORATION

6-8-6 Izumi-cho

Nishitokyo-shi, Tokyo 202-0011 Japan

Phone: +81 (042) 423-2521 Fax: +81 (042) 423-2525

Email: nworks@jade.dti.ne.jp

Homepage: www.jade.dti.ne.jp/~nworks/